

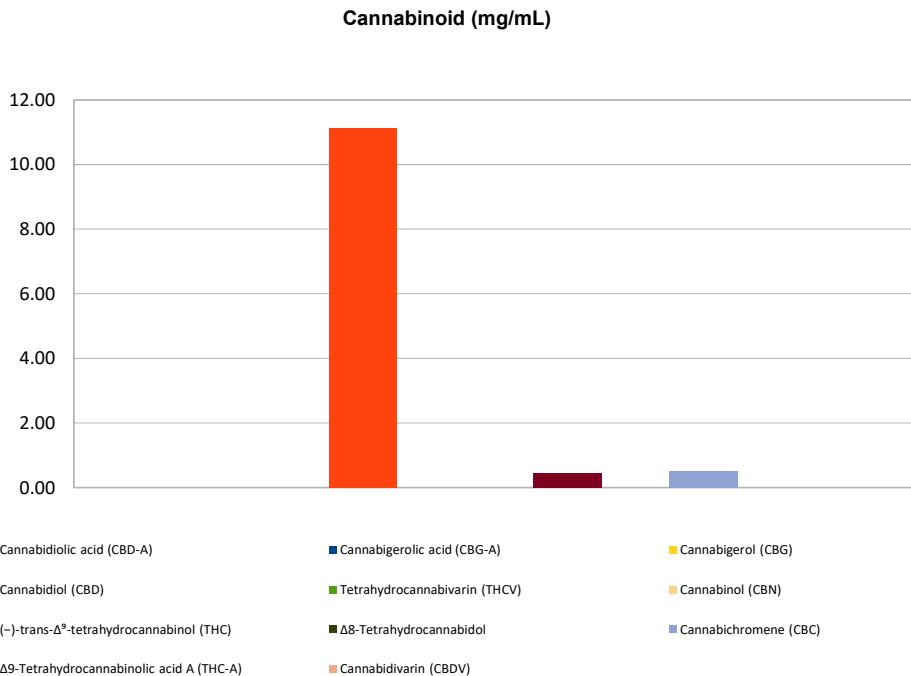


# Cannabinoid Profile

**Customer:** Healing Vibes Hemp Co.  
**Customer Sample ID:** 300mg Full Spectrum Tincture  
**Laboratory Number:** 201906-0852  
**Extraction Technician:** DF  
**Analytical Chemist:** CB  
**Density (g/mL):** 0.947

Extraction Date(s)	Analysis Date(s)
6/27/2019	6/27/2019

Cannabinoid (HPLC)	Results		
	LOD (mg/mL)	Percent	mg/mL
Cannabidiol (CBD)	<0.2		
Tetrahydrocannabivarin (THCV)	<0.2		
Cannabigerol (CBG)	<0.2		
Cannabidiol (CBD)		1.113%	11.13
Cannabidiol (CBD)	<0.2		
Tetrahydrocannabivarin (THCV)	<0.2		
Cannabidiol (CBD)	<0.2		
(-)-trans- $\Delta^8$ -tetrahydrocannabinol (THC)		0.045%	0.45
$\Delta^8$ -Tetrahydrocannabinol	<0.2		
Cannabichromene (CBC)		0.052%	0.52
$\Delta^9$ -Tetrahydrocannabinolic acid A (THC-A)	<0.2		
Cannabinoids Total		Percent	mg/mL
<b>Max Active THC</b>		<b>0.05%</b>	<b>0.45</b>
<b>Max Active CBD</b>		<b>1.11%</b>	<b>11.13</b>
<b>T. Active Cannabinoids</b>		<b>1.23%</b>	<b>12.26</b>
<b>Total Cannabinoids</b>		<b>1.23%</b>	<b>12.26</b>
Ratios			
<b>24.47 :1 CBD to THC</b>		<b>0.04 :1 THC to CBD</b>	



Altitude Consulting, LLC utilizes NIST traceable Reference Standards and Certified Reference Material to calibrate analytical instruments along with proven analytical methods. The methods are applied in the most ethical manner following good laboratory practice guidelines. The results of this report are based solely on the sample submitted and cannot be reproduced.

This report expires 30 days after analysis date.